



EURO CTO CLUB
www.eurocto.eu

The Experts „Live“ Workshop 2011

September 23-24, 2011

Wiesbaden, Germany

Kurhaus Kolonnaden

Course Directors

Nicolaus Reifart

Main Taunus Kliniken
Bad Soden, Germany

Gerald S. Werner

Medizinische Klinik
Klinikum Darmstadt
Darmstadt, Germany

Co-Directors

Alfredo R. Galassi

Ferrarotto Hospital
University of Catania
Catania, Italy

George Sianos

AHEPA University Hospital
Thessaloniki, Greece

Hans Bonnier

University Hospital Brussels
Brussels, Belgium

Endorsed by:



BNK



Final Programme



CTO Solution

| | |
|------------------------|-------------------------|
| <i>Corsair</i> | <i>Tornus</i> |
| <i>Ultimatebros 3</i> | <i>RG 3</i> |
| <i>Fielder FC</i> | <i>Fielder XT</i> |
| <i>Miracle 3</i> | <i>Miraclebros 3</i> |
| <i>Miracle 4.5</i> | <i>Miraclebros 4.5</i> |
| <i>Miracle 6</i> | <i>Miraclebros 6</i> |
| <i>Miracle 12</i> | <i>Miraclebros 12</i> |
| <i>Conquest</i> | <i>Confianza</i> |
| <i>Conquest Pro</i> | <i>Confianza Pro</i> |
| <i>Conquest Pro 12</i> | <i>Confianza Pro 12</i> |

 **ASAHI INTECC**

Creating new synergy in
Germany with



Nicolai

Welcome | 3rd Experts "Live" Workshop 2011

Course Directors



Nicolaus Reifart
Main Taunus Kliniken
Bad Soden, Germany



Gerald S. Werner
Medizinische Klinik
Klinikum Darmstadt
Darmstadt, Germany

Dear colleagues, Dear friends,

Chronic total occlusions (CTOs) of coronary arteries represent one of the greatest challenges to interventional cardiologists. Successful CTO revascularization has been strongly associated with improvement of left ventricular function, freedom from angina and less need for future CABG, and in several registries was associated with improved survival.

Recently specific wires and wiring techniques, and novel strategies like the retrograde approach have improved the success rate in the hands of experts from 70% to about 90%. In 2006 "The Euro CTO Club", a non-profit association, has been constituted (officially constituted in 2008) with the aim of knowledge exchange among the most experienced European interventionalist in the field of CTO, assess new technologies and strategies.

Since 2007 the Club is active in the field of research, teaching, and promotion of percutaneous revascularization of CTO, which in most European countries is still the main indication for referring patients to bypass surgery.

In 2011 the Euro CTO Club organizes its third Annual Meeting, a selected course limited to 300 interventionalists who are interested to approach CTO in the near future or to increase the expertise in this most complex field of coronary interventions. The course faculty consists of high volume CTO-experts who present a few State of the Art lectures and provide very practical and didactic live taped cases as well as vivid discussions with international experts and all attendees.

We hope that this meeting will find your interest and we look forward to seeing you in Wiesbaden, Germany.

All the solutions, whenever you need them

Ultra low entry profile 0.40 mm

Tazuna® is a high performance PTCA dilatation catheter designed with ultra low entry profile for improved crossability.

Tazuna® provides the highest level of performance for CTO lesions.

Tazuna®
GO THROUGH CTO

INDEX

| | |
|---|----|
| Programme: Friday, September 23, 2011 | 6 |
| Programme: Saturday, September 24, 2011 | 9 |
| Social Programme | 12 |
| Map of Directions | 14 |
| Euro CTO Club | 16 |
| General Information | 21 |
| Sponsors | 22 |
| Floorplan Congress Venue | 24 |

Scientific Programme

Friday, September 23, 2011

09:00 Welcome

N. Reifart, Germany & G. S. Werner (Germany)

Session A

Chairmen: O. Katoh (Japan); G. S. Werner (Germany)

Discussants: O. Goktekin (Turkey); J. Harnek (Sweden); E. Tsuchikane (Japan)

09:05 CTO in 1978 – personal experience

M. Kaltenbach (Germany)

09:15 How to start a CTO Program?

W. L. Lombardi (USA)

09:30 - RECORDED LIVE CASES 1 - 2

11:00 Antegrade approach – basics

CASE 1

Presenter: N. Reifart (Germany)

CASE 2

Presenter: G. Olivecrona (Sweden)

11:00 Coffee break

Session B

Chairmen: D. Hildick-Smith (United Kingdom); H. Bonnier (Belgium)

Discussants: A. Bufe (Germany); A. Gagnor (Italy); J. Wójcik (Poland)

State of CTO – PCI in:

11:30 JAPAN

E. Tsuchikane (Japan)

11:40 EUROPE

A. R. Galassi (Italy)

11:50 The Canadian CTO registry

B. Strauss (Canada)

12:00 - RECORDED LIVE CASES 3 - 4

13:30 Antegrade approach – advanced

CASE 3

Presenter: G. Sianos (Greece)

CASE 4

Presenter: O. Goktekin (Turkey)

13:30 Lunch

Session C

Chairmen: A. Gershlick (United Kingdom); E. Tsuchikane (Japan)

Discussants: T. Gürmen (Turkey); I. Sheiban (Italy); D. Tchetché (France)

14:15 - RECORDED LIVE CASES 5 - 6

15:45 Role of Imaging

CASE 5

Presenter: G. S. Werner (Germany)

CASE 6

Presenter: J. Escaned (Spain)

15:45 Coffee break

Session D

Chairmen: C. Di Mario (United Kingdom); W. L. Lombardi (USA)

Discussants: K.-E. Hauptmann (Germany); M. Carlino (Italy); G. Heyndrick (Belgium)

16:00 How to “digest” a CTO, and other new device approaches

B. Strauss (Canada)

16:15 Cases of CTO complications and CTO failures

(8 presenters -15 min each)

Presenter 1: H.-J. Büttner (Germany)

Presenter 2: A. Bufe (Germany)

Presenter 3: C. Di Mario (United Kingdom)

Presenter 4: R. Garbo (Italy)

Presenter 5: A. Gershlick (United Kingdom)

Presenter 6: Y. Lefevre (France)

Presenter 7: A. Serra (Spain)

Presenter 8: I. Sheiban (Italy)

18:15 Wrap-Up of Day 1 and Get Together

(For details please see page 12)

OMEGA™

Platinum Chromium Coronary Stent System

**Strength
& Deliverability.**
Pure PtCr performance.



Experience the next generation in bare-metal coronary stenting with the OMEGA™ Stent.

Powered by Platinum Chromium and in combination with a new, innovative stent design, the OMEGA™ Stent is an exceptionally strong, highly deliverable and most visible thin-strut-coronary stent.¹

www.PtCr-Stent.com

¹ To Date. Test conducted at Boston Scientific. Data on file. Platinum Chromium Technical Bulletin PDM 90353760.

This material is not intended for use in the United States and Japan. Stent illustrations not indicative of clinical performance. The PtCr icon in the illustration is not actually embedded in the stent. All cited trademarks are the property of their respective owners. CAUTION: The law restricts these devices to sales by or on the order of a physician. Indications, contraindications, warnings and instructions for use can be found in the product labeling supplied with each device. Information for the use only in countries with applicable health authority product registrations.

© 2011 by Boston Scientific Corporation or its affiliates. All rights reserved.

Scientific Programme

Saturday, September 24, 2011

Session E

Chairmen: M. Yamane (Japan); A. R. Galassi (Italy)

Discussants: R. Garbo (Italy); J. Schofer (Germany); J. C. Spratt (United Kingdom)

09:00 **What is new in CTO technique in 2011 – impact of new wires**
M. Ochiai (Japan)

09:15 - **RECORDED LIVE CASES 7 - 8**

10:45 **Retrograde – basics**

CASE 7

Presenter: C. Di Mario (United Kingdom)

CASE 8

Presenter: A. R. Galassi (Italy)

10:45 **Nephro-and Radioprotection in CTO PCI**

G. S. Werner (Germany)

11:00 Coffee break

Session F

Chairmen: M. Ochiai (Japan); N. Reifart (Germany)

Discussants: E. H. Christiansen (Denmark); J. Escaned (Spain); Y. Louvard (France)

11:30 **Current results and complications of CTO PCI**

C. Di Mario (United Kingdom)

11:45 - **RECORDED LIVE CASES 9 - 10**

13:15 **Retrograde – complex**

CASE 9

Presenter: A. R. Galassi (Italy)

CASE 10

Presenter: M. Yamane (Japan)

13:15 **Glimpse into the future of CTO PCI**
O. Katoh (Japan)

13:30 Lunch

Session G

Chairmen: H. J. Büttner (Germany); G. Sianos (Greece)

Discussants: T. Lefevre (France); G. Olivecrona (Sweden); A. Serra (Spain)

14:30 - **RECORDED LIVE CASES 11 - 12**

16:00 **Alternative – new techniques**

CASE 11

Presenter: G. S. Werner (Germany)

CASE 12

Presenter: G. Olivecrona (Sweden)

16:00 **Closing remarks**

General assembly of the Euro CTO Club

Farewell – Dinner

(For details please see page 13)

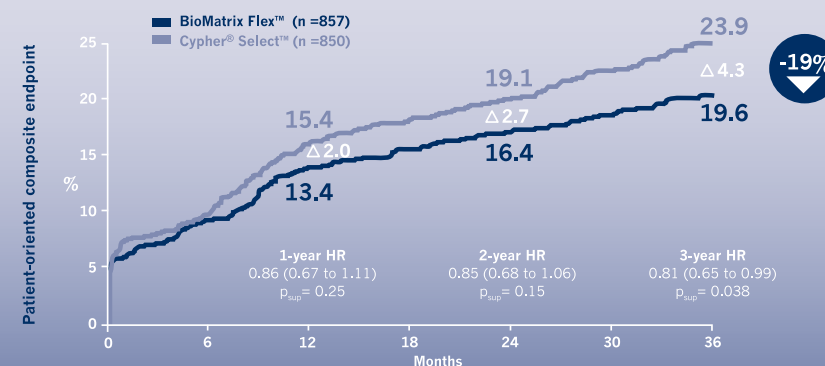


Significant benefit in patient-oriented outcomes at 3 years



BIOMATRIX
DRUG ELUTING CORONARY STENT SYSTEM **FLEX**™

Significant lower risk in the patient-related
composite endpoint of death, MI,
and any repeat revascularization at 3 years¹



LEADERS post-hoc analysis

Patient-oriented composite endpoint (ARC defined): all death, all MI, and any repeat revascularization procedures
¹Windecker, S., oral presentation, EuroPCR 2011



BIOSENSORS
INTERNATIONAL™

Biolimus A9, BA9 and BioMatrix Flex are trademarks or registered trademarks of Biosensors International Group, Ltd. All cited trademarks are the property of their respective owners.
Not available for sale in the United States and certain other countries.
© 2011 Biosensors International Group, Ltd. All rights reserved.

Map of Directions

Congress Venue:
Kurhaus Kolonnaden
Kurhausplatz 1
65189 Wiesbaden



1 Congress Venue:
Kurhaus Kolonnaden

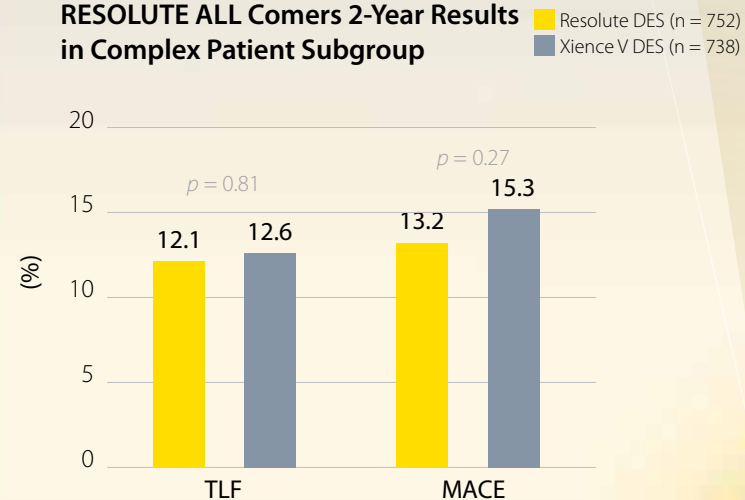
2 Member's Hotel:
Hotel Nassauer Hof

3 Get Together:
Casinogesellschaft

4 Farewell-Dinner:
Restaurant Käfer'S/Kurhaus Wiesbaden

Powerful clinical outcomes for complex daily practice

RESOLUTE ALL Comers 2-Year Results in Complex Patient Subgroup



Designed for the needs of an increasingly complex clinical practice, **Resolute Integrity DES** combines powerful clinical performance with superior deliverability* vs. major competitors.

Make the complex simple

Resolute Integrity

ZOTAROLIMUS-ELUTING CORONARY STENT SYSTEM

Innovating for life.

Resolute Integrity DES now has expanded indications for diabetes mellitus, multivessel disease, long lesions and small vessels.
*Bench test data vs. Abbott Xience Prime and Boston Scientific Promus Element DES on file at Medtronic, Inc.
These tests are not indicative of clinical performance.
Complex patient definition: Bifurcation, SVG, ISR, AMI <72 hr, LVEF <30%, unprotected LM, >2 vessels oriented, renal insufficiency or failure (creatinine >140 µmol/L), lesion length >27 mm, >1 lesion/vessel, lesion with thrombus or TIO (preprocedure TIMI = 0).
Currently, Resolute DES is not specifically approved for the subsets noted in this complex patient definition.
p-Values are based on Fisher's Exact Test; p-Values for outcome differences are unadjusted for multiple comparisons.
RESOLUTE All Comers 24-month data. RESOLUTE All Comers evaluated the Resolute stent.
For distribution only in markets where Resolute Integrity DES is approved. Not for distribution in the USA or Japan.
© 2011 Medtronic, Inc. All rights reserved. UC201200736EE 6/11

EURO CTO CLUB

Course Directors

Nicolaus Reifart
Main Taunus Kliniken
Bad Soden, Germany

Gerald S. Werner
Medizinische Klinik – Klinikum Darmstadt
Darmstadt, Germany

Co-Directors

Alfredo R. Galassi
Ferrarotto Hospital –
University of Catania
Catania, Italy

Hans Bonnier
University Hospital Brussels
Brussels, Belgium

George Sianos
AHEPA University Hospital
Thessaloniki, Greece

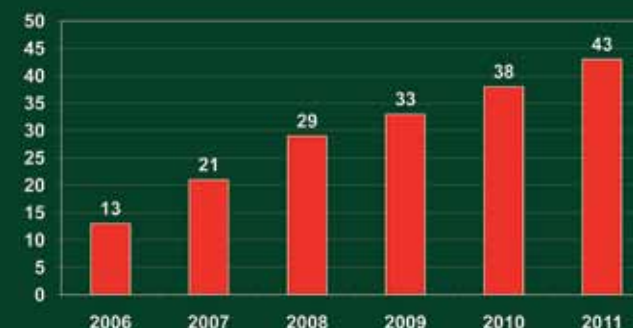
Club Members

Hans Bonnier, Belgium
Alexander Bufe, Germany
Heinz Joachim Büttner, Germany
Mauro Carlino, Italy
Bernard Chevalier, France
Evald Høj Christiansen, Denmark
Antonio Colombo, Italy
Mauro de Benedictis, Italy
Carlo Di Mario, United Kingdom
Dariusz Dudek, Poland
Simon Elhadad, France
Andrejs Erglis, Latvia
Javier Escaned, Spain
Jean Fajadet, France
Alfredo R. Galassi, Italy
Andrea Gagnor, Italy
Roberto Garbo, Italy
Anthony Gershlick, United Kingdom
Omer Goktekin, Turkey
Tevfik Gürmen, Turkey
Jan Harnek, Sweden

Karl-Eugen Hauptmann, Germany
Guy Heyndrick, Belgium
David Hildick-Smith, United Kingdom
Jacques Koolen, Netherlands
Thierry Lefevre, France
Yves Louvard, France
Göran Olivecrona, Sweden
Nicolaus Reifart, Germany
Bernhard Reimers, Italy
Joachim Schofer, Germany
Ralph Schulze, Germany
Antonio Serra, Spain
Imhad Sheiban, Italy
George Sianos, Greece
Horst Sievert, Germany
James C. Spratt, Scotland
Didier Tchetché, France
Leif Thuesen, Denmark
Jean Fajadet, France
Gerald S. Werner, Germany
Jarosław Wójcik, Poland

EURO CTO CLUB - STATISTICS

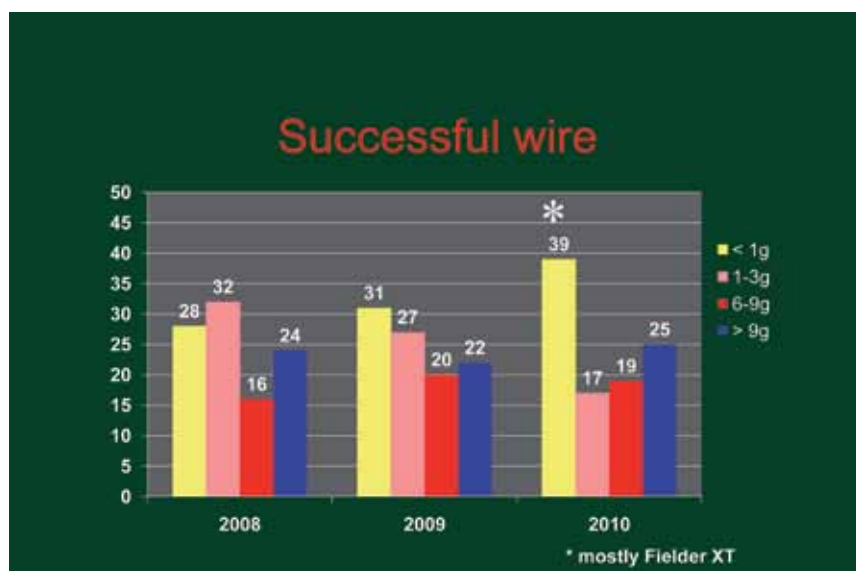
Euro CTO Club Membership



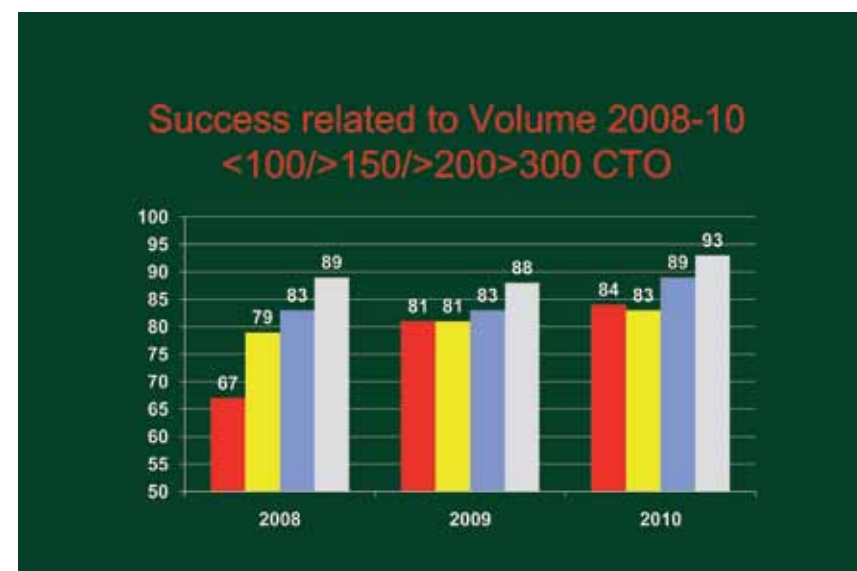
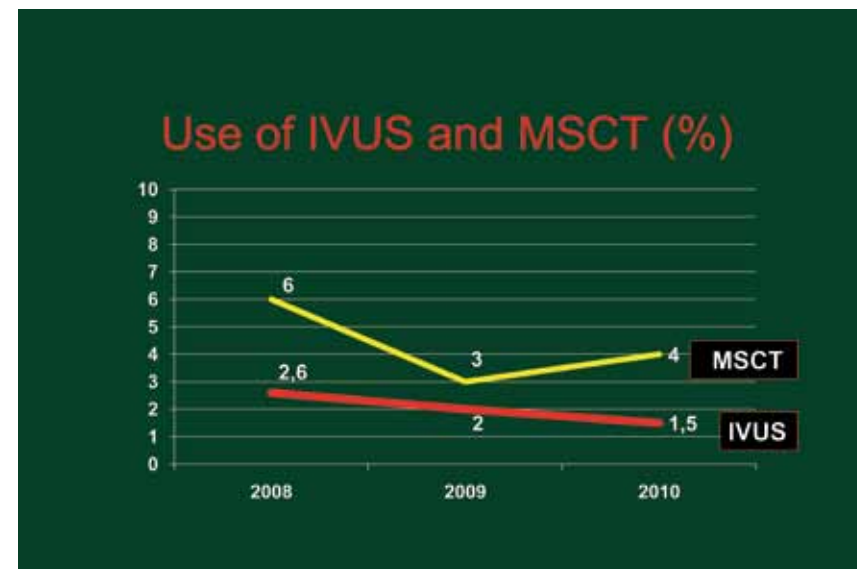
11481 CTO Procedures



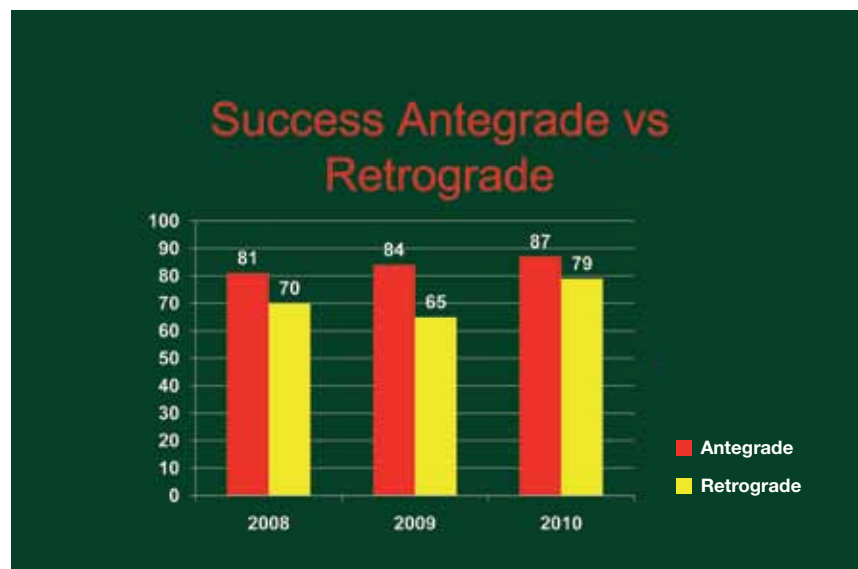
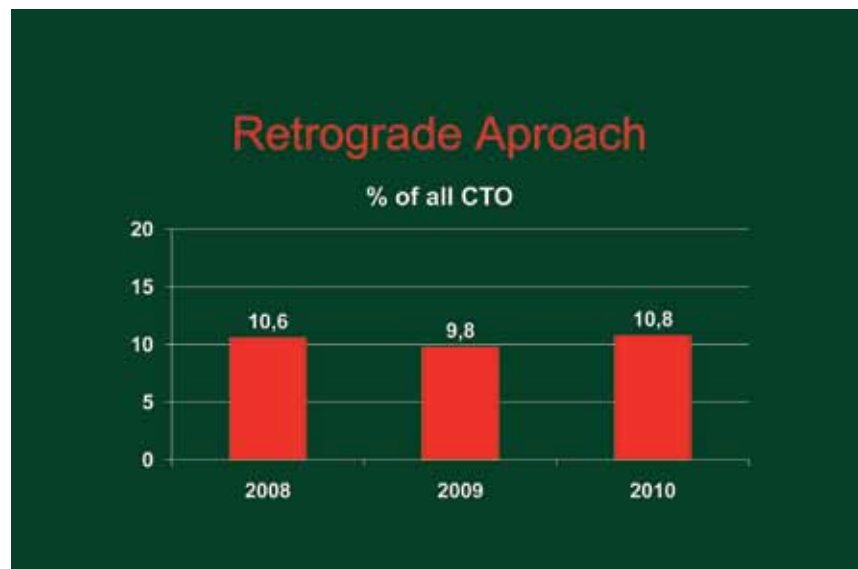
EURO CTO CLUB - STATISTICS



EURO CTO CLUB - STATISTICS



EURO CTO CLUB - STATISTICS



General Information

3rd Experts "Live" Workshop 2011
September 23 - 24, 2011
Wiesbaden, Germany

Venue:

Kurhaus Kolonnaden Wiesbaden
Kurhausplatz 1 | D-65189 Wiesbaden, Germany
Tel.: +49 (0) 611 - 172 92 90
eMail: kurhaus@wiesbaden.de | www.wiesbaden.de

Language:

The official language of the congress is English. No simultaneous translation is available.

Certificate of Attendance

The Certificate of Attendance will be available on-site at the conference desk.
The meeting is accredited by the European Board of Accreditation in Cardiology (EBAC).

Registration:

750,00 € incl. VAT - The Registration for the Conference includes:

- Receipt of the badge of the conference bag
- Attendance of the conference proceedings
- Coffee breaks, lunches, dinners
- Receipt of the Certificate of Attendance

Scientific Organisation:



Euro CTO Club - Nicolaus Reifart, Germany
Gerald S. Werner, Germany
Alfredo R. Galassi, Italy
George Sianos, Greece
Hans Bonnier, Belgium

Congress Organisation



wikonect GmbH
Hagenauer Strasse 53 | D-65203 Wiesbaden, Germany
Tel.: +49 (0) 611 204 809 0 | Fax: +49 (0) 611 204 809 10
eMail: info@wikonect.de | www.wikonect.de

We thank the following companies for their support!

Platinum Sponsor



Gold Sponsor



Silver Sponsor



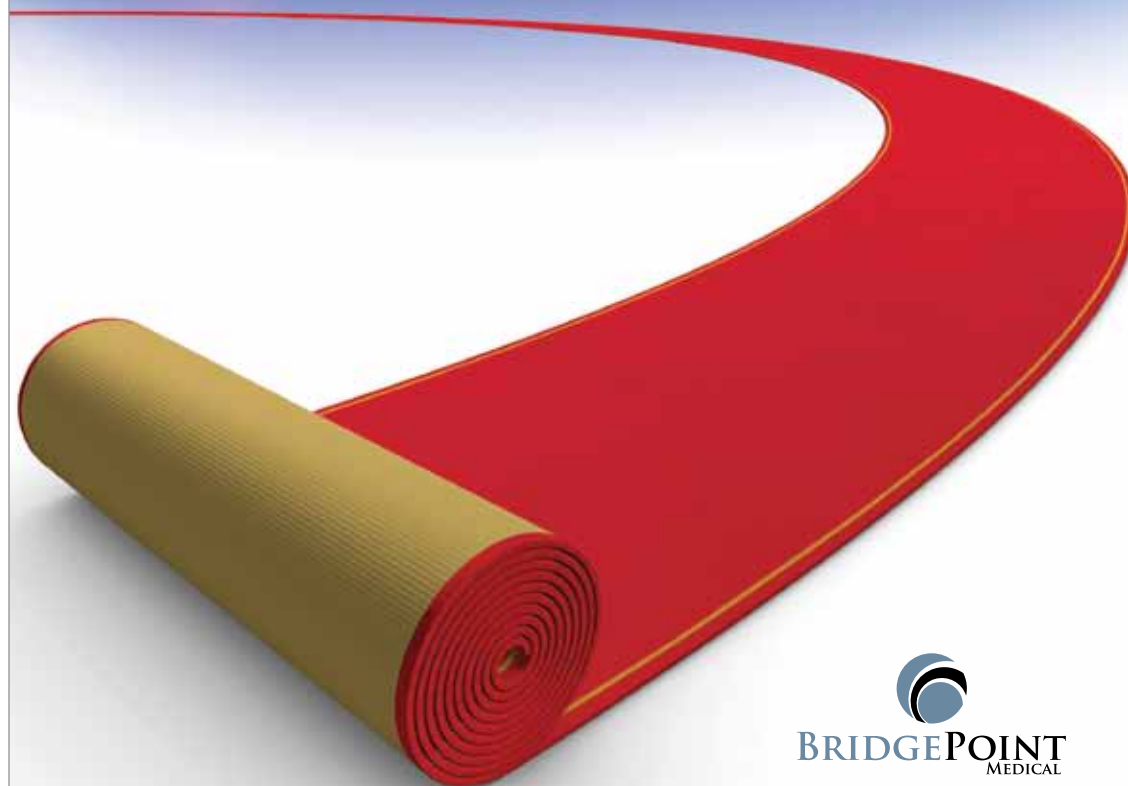
Sponsor

ACIST Medical Systems
Alvimedica Medical Technologies
AstraZeneca GmbH
B.Braun Melsungen AG
Lilly Deutschland GmbH
Nicolai GmbH
The Medicines Company Deutschland GmbH

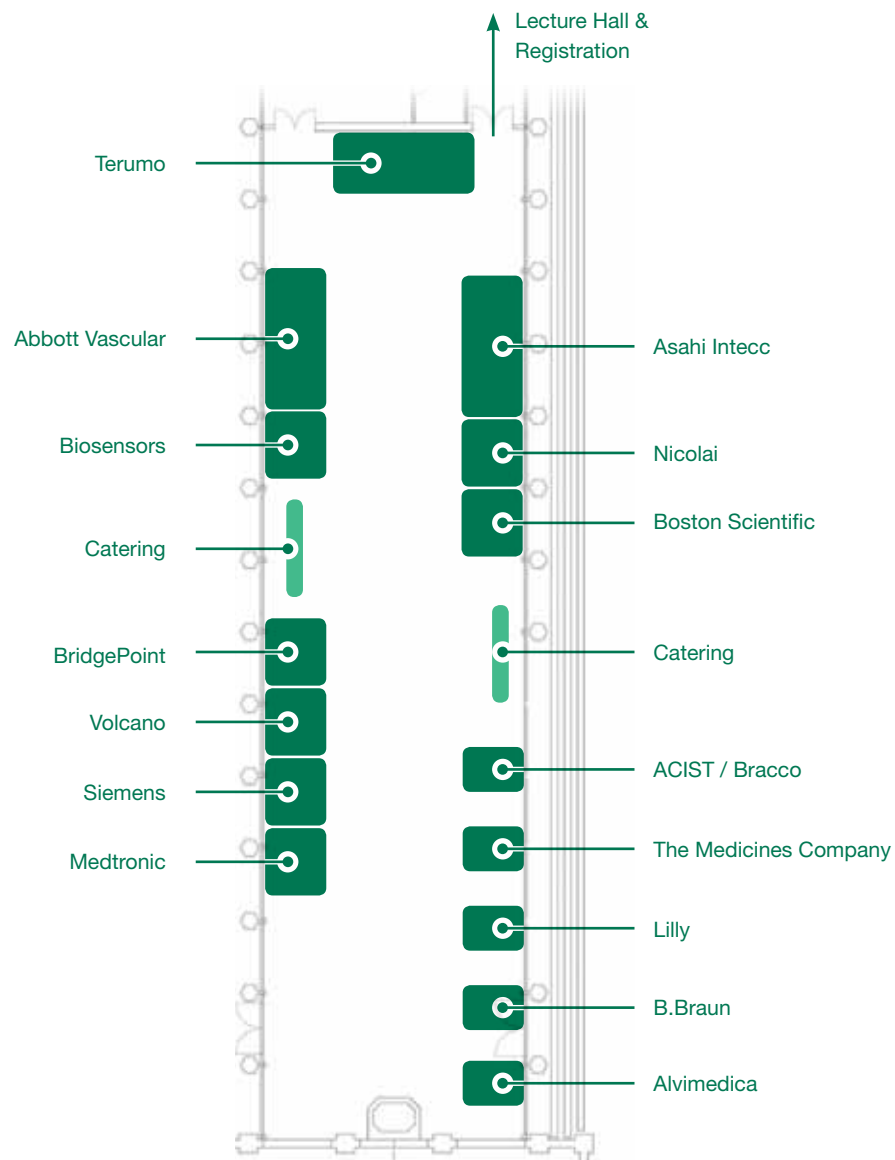
Learn more at our booth

TOTAL ACCESSTM

TO CHRONIC TOTAL OCCLUSIONS



Floorplan Congress Venue



SIEMENS

A91CC-9179-A1-7600
© 2011, Siemens AG

www.siemens.com/esc

Are you ready for the long-run?

Sustainable Cardiovascular Care

Cardiovascular care is in motion. On the one hand, healthcare systems hold increasing economical challenges. On the other hand, you want to safeguard your position as a leading cardiovascular care provider, both today and in the years to come. How to solve this issue?

With a partnership that lasts. At Siemens, we accompany you. We provide solutions that are sustainable

and affordable, again and again. This is the long-run. And to navigate it, we provide you with technology that can support your ability to make sounder decisions, perform safer procedures, operate with better efficiency, and invest resources wisely. In short, we help you establish a sound basis for the future – so you are perfectly prepared for the long-run.

Answers for life.

Imprint

Scientific Board

Nicolaus Reifart
Main Taunus Kliniken
Bad Soden, Germany

Gerald S. Werner
Medizinische Klinik
Klinikum Darmstadt
Darmstadt, Germany

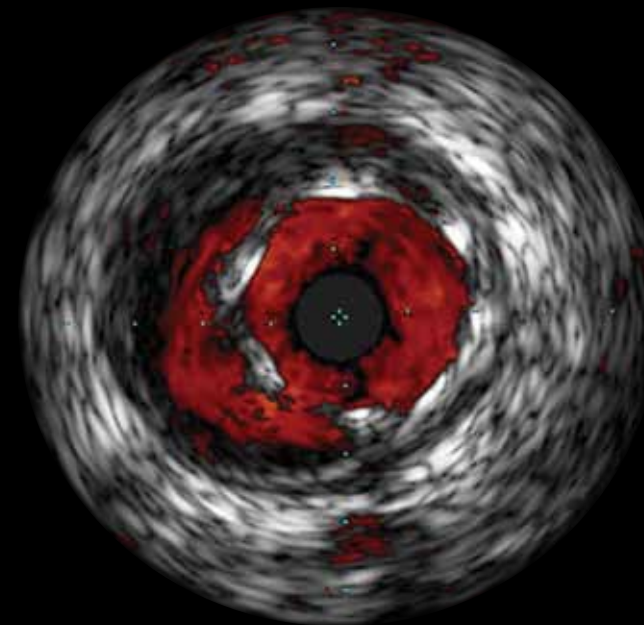
Alfredo R. Galassi
Ferrarotto Hospital
University of Catania
Catania, Italy

George Sianos
AHEPA University Hospital
Thessaloniki, Greece

Hans Bonnier
University Hospital Brussels
Brussels, Belgium

Congress agency / Organizer

wikonect GmbH
Daniel M. Metzler
Hagenauer Str. 53
65203 Wiesbaden, Germany



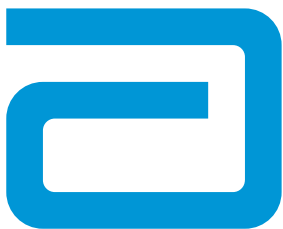
Simple.

Volcano's ChromaFlo® Imaging highlights blood red at the touch of a button, for the easiest assessment of stent apposition, lumen size, bifurcations, dissection, thrombus, and more. No special procedures or flushing required. Appropriate for both coronary and peripheral applications. And... it's already available in more than 3500* labs worldwide.

For more information, visit www.knowchromaflo.com

ChromaFlo® Imaging
Enhanced Clarity. Simple.

 **VOLCANO**
PRECISION GUIDED THERAPY



Driving Innovation Delivering Solutions

TREK & MINI TREK

Coronary Dilatation Catheter

No environment too challenging

Experience a smooth transitionless design for maximum control even when accessing complex lesions

MINI TREK built for Complex Lesions



77 sizes.
Including 1.20 mm diameters

PROGRESS

Family of Chronic Occlusion Guide Wires

Know where you're going,
not where you've been.

- 1 Tapered, exposed coil tip
- 2 Intermediate Polymer Sleeve with Hydrophilic Coating
- 3 Hydrophobic Coating



All products here in are trademarks of the Abbott Group of Companies.

Contact your sales representative for more information.

Photo(s) on file at Abbott Vascular. All drawings are artist's representations only and should not be considered as an engineering drawing or photograph.

Products intended for use by or under the direction of a physician. Prior to use, it is important to read the package insert thoroughly for instructions for use, warnings and potential complications associated with use of this device. Information contained herein is for distribution for Europe, Middle East and Africa ONLY. Please check the regulatory status of the device before distribution in areas where CE marking is not the regulation in force. For more information, visit our website at abbottvascular.com

© 2011 Abbott. All rights reserved. 1-EH-2-1187-01 07/2011

