

# The Experts „Live“ Workshop 2012

**September 21-22, 2012**  
**London,**

**Grange Tower Bridge Hotel**

**Course Director**

---

**Carlo Di Mario**  
London, UK

**Co-Directors**

---

**Anthony Gershlick**  
Leicester, UK

**David Hildick-Smith**  
Brighton, UK

**Scientific Board**

---

**Gerald S. Werner**  
Darmstadt, Germany

**Nicolaus Reifart**  
Bad Soden, Germany

**Alfredo R. Galassi**  
Catania, Italy

**Hans Bonnier**  
Brussels, Belgium

**George Sianos**  
Thessaloniki, Greece

**Javier Escaned**  
Madrid, Spain



## Final Programme

**Endorsed by:**

---

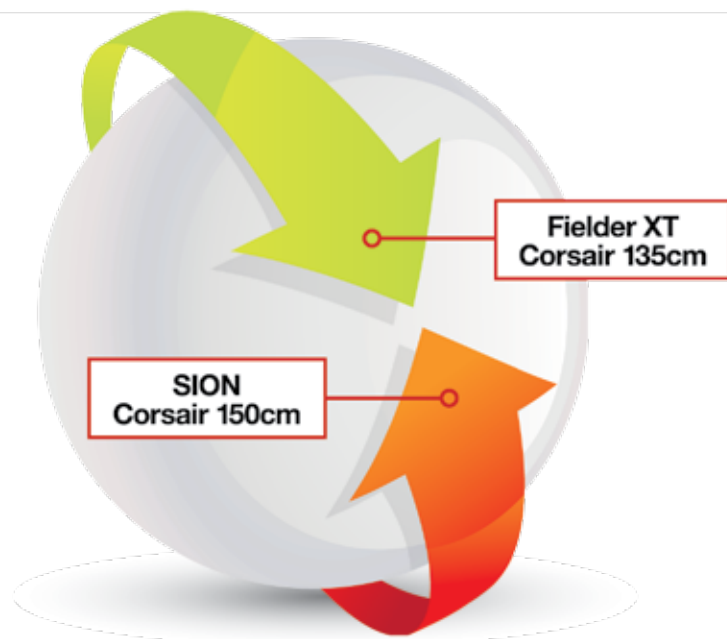


European Association of  
Percutaneous Cardiovascular  
Interventions (EAPCI)



British Cardiovascular  
Society (BCS)

## Proven Antegrade & Retrograde Success



### → ASAHI PTCA Guide Wires

SION  
SION blue  
Fielder XT  
Fielder FC  
Grand Slam

ULTIMATEbros 3  
Miracle / MIRACLEbros Family  
Conquest / CONFIANZA Family  
RG3

### → Microcatheters

Tornus, Corsair

### Asahi Intecc Co., Ltd.

**European Office**  
Strawinskylaan 967 (WTC Tower D,  
9th floor) 1077 XX Amsterdam,  
The Netherlands  
Tel. +31-20-794-0640  
Fax +31-20-794-0641  
www.asahi-intecc.com

\*SION\*, \*Corsair\* and \*Fielder\* are trademarks or registered trademarks of ASAHI INTECC CO., LTD. in Japan and other countries.



## INDEX

### Programme:

Friday, September 21, 2012

7

### Programme:

Saturday, September 22, 2012

11

### Social Programme

14

### Euro CTO Club

17

### General Information

25

### Sponsors

26



## Welcome

### Course Director



**Carlo Di Mario**  
National Heart and Lung Institute  
Imperial College,  
Royal Brompton Hospital  
London, UK

### ECC-President



**Gerald S. Werner**  
Medizinische Klinik  
Klinikum Darmstadt  
Darmstadt, Germany

**Dear colleagues,  
Dear friends,**

On behalf of the Euro CTO Club we would like to invite you to the 2012 meeting which will take place in London on Sept. 21st - 22nd.

**Why should I attend?** Chronic total occlusions are present in 10-15% of your patients and successful recanalization has been shown in a number of registries to improve medium and longer term prognosis, and effectively relieve symptoms of angina in patients resistant to medical therapy. With the dramatic increases in success rates CTO PCI is a viable option in most patients available to those practitioners trained in and exposed to contemporary techniques. Given that CTO patients are in general undertreated in Europe the main goal of the Euro CTO Club, the organising body of this congress, is to promote awareness of the need for CTO PCI, to educate operators of all skills and in particular to support operators who wish to improve their skills.

**What is the format of the course?** Experts "Live" is not a live course. Experienced operators from the Club will show appropriately selected pre-recorded cases of CTOs highlighting a wide range of technical challenges, from the relatively easy to the most complex. Interaction with the course delegates will allow the steps in the procedure to be discussed and alternatives to be presented. Special attention is given to characteristics of dedicated guidewires or microcatheters. While the course will drive an ethos of education towards success some failures will also be presented, the reasons for failure will be explored, thus advancing possible future techniques to enhance subsequent success. We always show complications to help you recognise them early as they start to occur and thus be better prepared with potential solutions.

## 4th Experts "Live" Workshop 2012

### Co-Directors



**Anthony Gershlick**  
University of Leicester  
Leicester, UK



**David Hildick-Smith**  
Sussex Cardiac Centre  
Brighton, UK

**What can I expect from this course?** The course is designed to suit all grades of operators from the most basic to the most skilled - setup of shots, equipment choice, upcoming technologies, complex retrograde cases and much more will be covered. The course is the annual forum focusing discussion of the 41 members of Euro CTO Club but its success depends on the active participation of every interventionist genuinely interested to spend time and effort on improving outcomes in CTO patients.

Carlo Di Mario, Course Director

Gerald S. Werner, ECC-President

Anthony Gershlick, Co-Director

David Hildick-Smith, Co-Director

# All the solutions, whenever you need them

## Ultra low entry profile 0.40 mm

*Tazuna® is a high performance PTCA dilatation catheter designed with ultra low entry profile for improved crossability.*

*Tazuna® provides the highest level of performance for CTO lesions.*

**Tazuna®**  
GO THROUGH CTO

**TERUMO®**



## Scientific Programme

Friday, September 21, 2012

09:00 **Welcome**  
Carlo Di Mario, London, UK

### INTRODUCTION TO CTO TREATMENT

Chairmen: Guy Heyndrickx, Aalst, Belgium;  
David Hildick-Smith, Brighton, UK

09:05 **A Dictionary CTO Slang/English**  
Anthony Gershlick, Leicester, UK

09:20 **How to acquire and read a CTO angiogram?**  
Masahiko Ochiai, Tokyo, Japan

09:35 **Dedicated CTO kit: wires**  
Gerald Werner, Darmstadt, Germany

09:55 **Dedicated CTO kit: microcatheters and balloons**  
Antonio Serra, Barcelona, Spain

10:10 **Dedicated CTO kit: adjunctive devices**  
Craig Thompson, Yale, USA

10:30 Coffee break

### RECORDED LIVE CASES 1-2

Chairmen: Gerald Werner, Darmstadt, Germany;  
Georgios Sianos, Thessaloniki, Greece  
Panelists: Jacques Koolen, Eindhoven, Netherlands;  
Thierry Lefevre, Massy-Paris, France;  
Keith Oldroyd, Glasgow, UK

11:00 **Two “Easy” anterograde cases**  
CASE 1 – Presenter: Nick Palmer, Carlo Di Mario, London, UK  
CASE 2 – Presenter: Claus Reifart, Bad Soden, Germany

12:30 **The European CTO Registry**  
Alfredo Galassi, Catania, Italy



12:45 Lunch

#### CTO DEBATE 2012

Chairmen: Javier Escaned, Madrid, Spain;  
Masahiko Ochiai, Tokyo, Japan  
Panelists: Didier Tchetché, Toulouse, France;  
Yves Louvard, Massy-Paris, France;  
Angela Hoye, Hull, UK

13:30 **6 Fr (and therefore radial) can be used in most cases**  
George Sianos, Thessaloniki, Greece

13:40 **Femoral 7-8 Fr is the Gold Standard**  
Yasushi Asakura, Toyohashi, Japan

13:50 **The Jury is out: Panel**

#### RECORDED LIVE CASES 3-4

14:00 **Two “Difficult” CTO cases**  
CASE 3 – Presenter: George Sianos, Thessaloniki, Greece  
CASE 4 – Presenter: Roberto Garbo, Rivoli-Turin, Italy

#### IMAGING IN CTO RECANALISATION

15:30 **MSCT before CTO: when to do, what to look for**  
Thierry Lefevre, Massy, France

15:45 **IVUS during CTO: when to do, what to look for**  
Osamu Katoh, Kyoto, Japan

16:00 Coffee break

#### CTO COMPLICATIONS AND FAILURES

Chairmen: Hans Bonnier, Eindhoven, Netherlands;  
Claus Reifart, Bad Soden, Germany  
Panelists: Imad Sheiban, Turin, Italy;  
David Hildick-Smith, Brighton, UK;  
Colm Hanratty, Belfast, UK

16:15 **What did I do wrong?**  
(15 mins each)  
Joachim Buettner, Bad Krotzingen, Germany  
Laszek Bryniarski, Krakow, Poland  
Claus Reifart, Bad Soden, Germany  
Aigars Lismanis, Riga, Latvia  
Carlo Di Mario, London, UK  
Marcus Meyer-Gessner, Duesseldorf, Germany  
Alexander Bufe, Wuppertal, Germany  
Gerald Werner, Darmstadt, Germany  
Elliot Smith, London, UK

#### CTO MASTER LECTURE 2012

18:15 Presentation: Carlo Di Mario, London, UK

18:30 End of day 1

19:30 **GET TOGETHER AT OLD ROYAL NAVAL COLLEGE, GREENWICH**



# Emerge™

PTCA Dilatation Catheter



## Reduced Shaft Profile for Simultaneous Use

Shaft profile allows for simultaneous use of two Monorail™ catheters in a 2 mm (8 F) guide catheter and two Over-the-Wire catheters in a 2.67 mm (8 F) guide catheter<sup>1</sup>



## Small 1.2 mm Size

Exceptional deliverability<sup>2</sup> and low profiles designed to cross tight lesions



## Lead the way.

Emerge combines the best of Boston Scientific balloon technologies to offer exceptional deliverability with an ultra-low tip profile, for a pre-dilatation balloon catheter designed to navigate and cross even the most difficult lesions with unprecedented ease.

*Defining tomorrow, today.™*



To find out more  
about Emerge™, use  
your smartphone to  
scan this code.

## Scientific Programme

Saturday, September 22, 2012

### INDUSTRY SPONSORED BREAKFAST SYMPOSIUM

Chairmen: Sudhir Rathore, Frimley Park, UK;  
Thierry Lefevre, Massy-Paris, France

07:00 **Breakfast**

07:30 **Bridgepoint**

**The hybrid approach & The Bridgepoint technology**  
Craig Thompson, Yale, USA

07:50 **Abbott Vascular**

**A complex CTO**  
James Spratt, Edinburgh, UK

08:10 **Volcano**

**The challenge of appropriate interpretation of FFR and IVUS in CTOs**  
Gerald S. Werner, Darmstadt, Germany

08:30 **Biosensors**

**DES for CTOs: Are they all created equal?**  
Carlo Di Mario, London, UK

### INTRODUCTION TO RETROGRADE RECANALIZATION

Chairmen: Anthony Gershlick, Leicester, UK;  
Osamu Katoh, Kyoto, Japan

Panelists: Jaroslaw Wojcik, Lublin, Poland;  
Mauro Carlino, Milan, Italy;  
Jonathan Hill, London, UK

09:00 **When a retrograde approach should be started first**

Masahisa Yamane, Tokyo, Japan

09:15 **Collateral morphology and success: what's possible  
(and safe) in 2012**

James Spratt, Edinburgh, UK





### RECORDED LIVE CASES 5-6

- 9:30 **Two “Easy” retrograde cases**  
CASE 5 – Presenter: Javier Escaned, Madrid, Spain  
CASE 6 – Presenter: Gerald S. Werner, Darmstadt, Germany
- 10:30 Coffee break

### RECORDED LIVE CASES 7-8

Chairmen: Javier Escaned, Madrid, Spain;  
Masahisa Yamane, Tokyo, Japan  
Panelists: Omer Goktekin, Istanbul, Turkey;  
Mauro De Benedictis, Turin, Italy;  
Julian Strange, Bristol, UK

- 10:45 **Two “Difficult” retrograde cases**  
CASE 7 – Presenter: Aigars Lismanis, Riga, Latvia  
CASE 8 – Presenter: Andrea Gagnor, Turin, Italy
- 12:40 **How to train to become a CTO operator**  
Craig Thompson, Yale, USA
- 12:50 **The position of the Euro CTO Club – An invited comment from the Past President of the Euro CTO Club**  
Nicolaus Reifart, Bad Soden, Germany
- 13:00 Lunch

### RETROGRADE DEBATE 2012

Chairmen: Alfredo Galassi, Catania, Italy;  
Craig Thompson, Yale, USA  
Panelists: Alexander Bufe, Wuppertal, Germany;  
Evald Christensen, Aarhus, Denmark;  
James Cotton, Wolverhampton, UK

- 13:45 **Selective injection is safer**  
Masahisa Yamane, Tokyo, Japan
- 13:55 **Collateral “surfing” is better**  
Sudhir Rathore, Frimley Park, UK
- 14:00 **The Jury is out: Panel**

### RECORDED LIVE CASES 9-10

- 14:10 **Two Cases using New Approaches**  
CASE 9 – Presenter: James Spratt, Edinburgh, UK  
CASE 10 – Presenter: Alfredo Galassi, Catania, Italy

### MORTALITY AND QUALITY OF LIFE IMPROVEMENT IN CTO RECANALIZATION

- 15:40 **Current evidence**  
Nick Palmer, Liverpool, UK
- 15:50 **Evidence needed**  
David Hildick-Smith, Brighton, UK
- 16:00 **Final Remarks**  
Gerald Werner, Darmstadt, Germany

### Euro CTO CLUB GENERAL ASSEMBLY

## Social Programme

### GET TOGETHER

**Friday, September 21, 2012**  
**07:30 p.m.**

#### Venue:

Old Royal Naval College  
Painted Hall  
Greenwich  
London | SE10 9LW  
[www.oldroyalnavalcollege.org](http://www.oldroyalnavalcollege.org)



Look forward to a cosy evening in a casual and communicative atmosphere at The Painted Hall / Old Royal Naval College.

The Painted Hall is often described as 'the finest dining hall in Europe'. Designed by Sir Christopher Wren and Nicholas Hawksmoor in 1698, it was originally intended as an eating space for the naval veterans, known as Greenwich pensioners, who lived here at the Royal Hospital for Seamen. On completion, it was found to be far too grand for everyday use, and quickly became one of London's first tourist attractions. Respectable visitors were admitted for 3d (about £1.80) and often hired Pensioners to give them guided tours.

Between 1824 and 1936 the Painted Hall was also known as the National Gallery of Naval Art, with 300 naval-themed paintings on display, which formed the basis of the National Maritime Museum's art collection.

Service: Transfer and Buffet incl. drinks

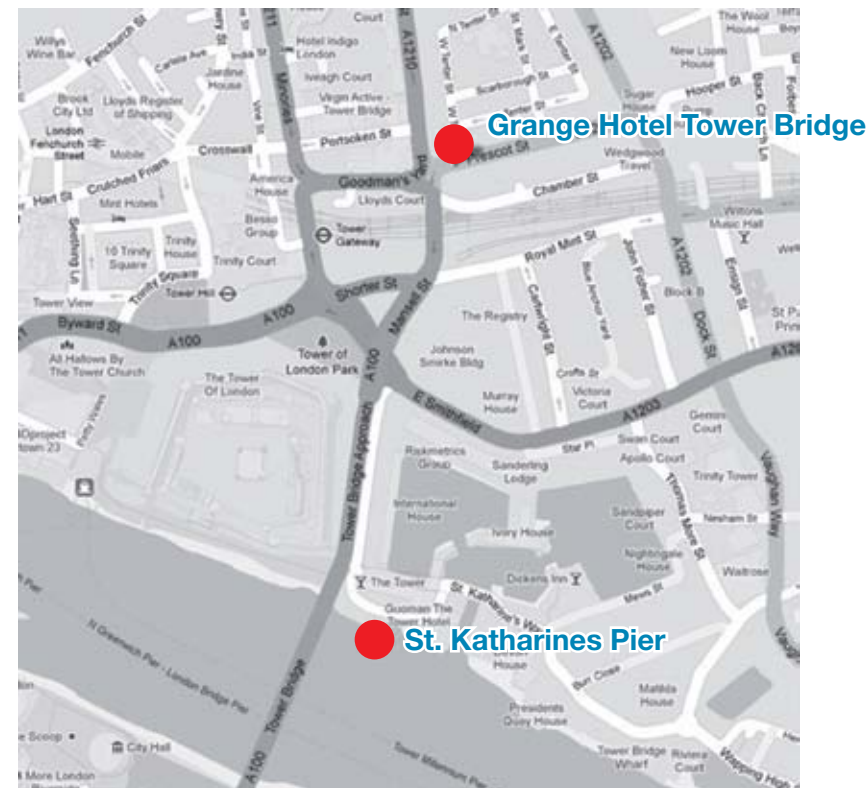
## How to get there!

**Transfer to PAINTED HALL via boat (Clipper).**

From St. Katharines Pier (next to Tower Bridge)  
to Greenwich Pier  
Departure time: 7 p.m.

From Greenwich Pier  
to St. Katharines Pier (next to Tower Bridge)  
Departure time: 10.30 p.m.

St. Katharines Pier is just 10 minutes walk from the Hotel.





**BioMATRIX**  
DRUG ELUTING CORONARY STENT SYSTEM **FLEX™**



# LESS RISK... MORE CONFIDENCE\* LEADERS

## 4-YEAR RESULTS

4-year results from the LEADERS study, a head-to-head randomized trial between BioMatrix Flex™ and a durable polymer sirolimus-eluting stent in an "all comers" patient population, were published in *The Lancet* in December 2011<sup>1</sup>:

1

**BioMatrix Flex™ -  
cutting the MACE rate out to 4 years**

MACE defined as cardiac death, MI, clinically initiated TVE

2

**80% relative risk reduction  
in definite VLST with BioMatrix Flex™**

VLST=Very late stent thrombosis

3

**Reduction in definite VLST  
associated with fewer cardiac events**



See presentation  
on-line<sup>2</sup>

  
**BIOSENSORS**  
INTERNATIONAL™

\* Based on LEADERS results on MACE, definite VLST and cardiac events associated with definite stent thrombosis out to 4 years.  
1. Stefanini GG et al. Long-term clinical outcomes of biodegradable polymer sirolimus-eluting stents versus durable polymer sirolimus-eluting stents in patients with coronary artery disease (LEADERS): A year follow-up of a randomised non-inferiority trial. *The Lancet*. 2011; 378(9807): 1242-9.  
2. Hacheger T et al. Long-term Clinical Results from the All comers LEADERS Trial: A year follow-up data and abstract presentation, ESC 2012.  
Biosensors Flex, Biosensors 99 and BA9 are trademarks or registered trademarks of Biosensors International Group, Ltd. All other trademarks are the property of their respective owners.  
Not available for sale in the United States and certain other countries. © 2012 Biosensors International Group, Ltd. All rights reserved.

[www.biosensors.com](http://www.biosensors.com)

**The Experts „Live“  
Workshop 2012**



## EURO CTO CLUB

### BOARD PRESIDENT

Gerald S. Werner  
Medizinische Klinik  
Klinikum Darmstadt  
Darmstadt, Germany

### PRESIDENT ELECT

Alfredo R. Galassi  
Cannizzaro Hospital  
University of Catania  
Catania, Italy

### PAST-PRESIDENT

**Nicolaus Reifart**  
Main Taunus Kliniken  
Bad Soden, Germany

### BOARD

**George Sianos**  
AHEPA University Hospital  
Thessaloniki, Greece

### BOARD

**Javier Escaned**  
San Carlo Hospital  
Madrid, Spain

### TREASURER

**Hans Bonnier**  
University Hospital Brussels  
Brussels, Belgium

### BOARD

**Carlo Di Mario**  
National Heart and Lung Institute  
Imperial College London  
London, UK

### COURSE DIRECTOR 2012

**Carlo Di Mario**  
National Heart and Lung Institute  
Imperial College London  
London, UK

### CO-DIRECTORS 2012

**Anthony Gershlick**  
University of Leicester  
Leicester, UK

**David Hildick-Smith**  
University of Brighton  
Brighton, UK

## CLUB MEMBERS

**Hans Bonnier**, Belgium  
**Alexander Bufe**, Germany  
**Heinz Joachim Büttner**, Germany  
**Mauro Carlino**, Italy  
**Bernard Chevalier**, France  
**Antonio Colombo**, Italy  
**Mauro De Benedictis**, Italy  
**Leszek Bryniarski**, Poland  
**Carlo Di Mario**, UK  
**Simon El Hadad**, France  
**Javier Escaned**, Spain  
**Andrejs Erglis**, Latvia  
**Dariusz Dudek**, Poland  
**Jean Fajadet**, France  
**Alfredo R. Galassi**, Italy  
**Andrea Gagnor**, Italy  
**Roberto Garbo**, Italy  
**Anthony Gershlick**, UK  
**Omer Goktekin**, Turkey  
**Tevfik Gürmen**, Turkey  
**Karl-Eugen Hauptmann**, Germany

**Jan Harnek**, Sweden  
**Guy Heyndrickx**, Belgium  
**David Hildick-Smith**, UK  
**Evald Høj Christiansen**, Denmark  
**Jacques Koolen**, Netherlands  
**Thierry Lefevre**, France  
**Yves Louvard**, France  
**Göran Olivecrona**, Sweden  
**Gerald S. Werner**, Germany  
**Nicolaus Reifart**, Germany  
**Bernhard Reimers**, Italy  
**Joachim Schofer**, Germany  
**Ralph Schulze**, Germany  
**Antonio Serra**, Spain  
**Imhad Sheiban**, Italy  
**George Sianos**, Greece  
**Horst Sievert**, Germany  
**James C. Spratt**, UK  
**Didier Tchetché**, France  
**Leif Thuesen**, Denmark  
**Jarosław Wójcik**, Poland

The Euro CTO Club cordially thanks the invited speakers for supporting the Workshop 2012 with their knowledge and expertise:

**Asakura, Yasushi, Dr.**, Japan  
**Katoh, Osamu, Dr.**, Japan  
**Ochiai, Masahiko, Prof.**, Japan  
**Palmer, Nick, Dr.**, UK  
**Rathore, Sudhir, Dr.**, UK  
**Thompson, Craig, Prof.**, USA  
**Yamane, Masahisa, Dr.**, Japan

The Euro CTO Club gratefully acknowledges the contribution to the preparation of the factoids of:

**Albert Alahmar, Dr.**, UK  
**Matteo Ghione, Dr.**, Italy  
**Kadriye Kılıçkesmez, Dr.**, Turkey



**Medtronic**

# Resolute Integrity

ZOTAROLIMUS-ELUTING CORONARY STENT SYSTEM



## SIMPLIFY THE CHALLENGE.

- Most deliverable DES\*
- Powerful clinical performance across the patient spectrum†
- First and only DES FDA-approved for patients with diabetes

Simplify the challenge at [medtronicstents.com](http://medtronicstents.com)

\*Based on bench test data on file at Medtronic, Inc.  
†Per the Resolute Integrity Indications for Use.

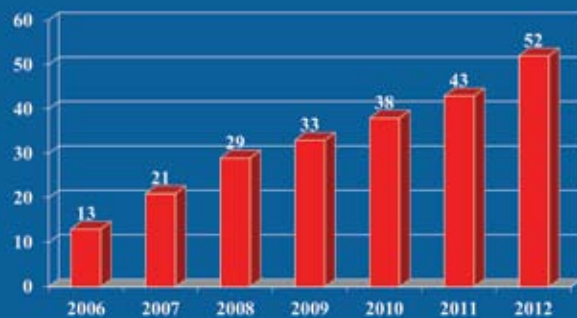
Innovating for life.





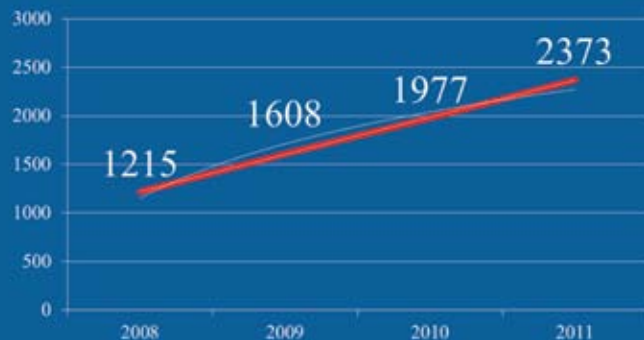
## EURO CTO CLUB - STATISTICS

### Euro CTO Club membership



Requirements: experience of 300 CTO and 50 / year

### Online Registry n = 7673

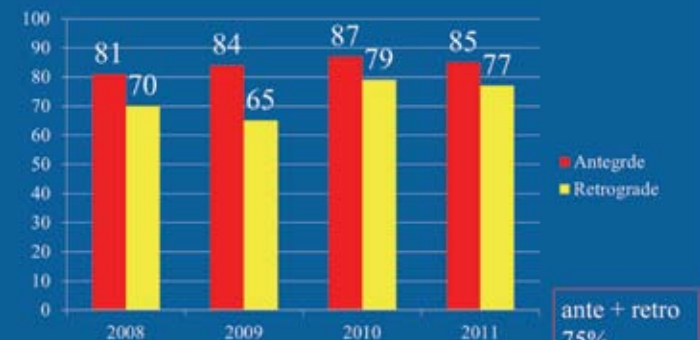


## EURO CTO CLUB - STATISTICS

### Retrograde Approach/all CTO (all operators – 50% at < 10%)

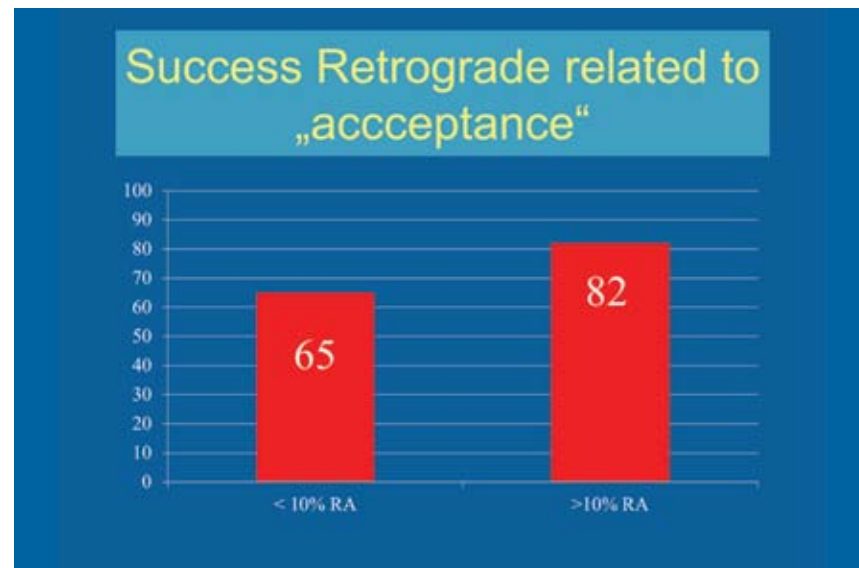


### Success Antegrade vs Retrograde

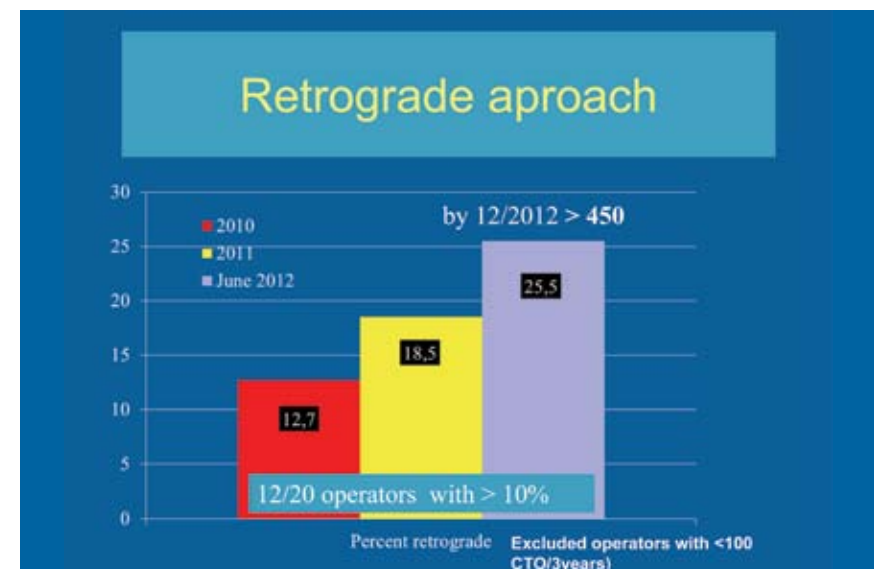
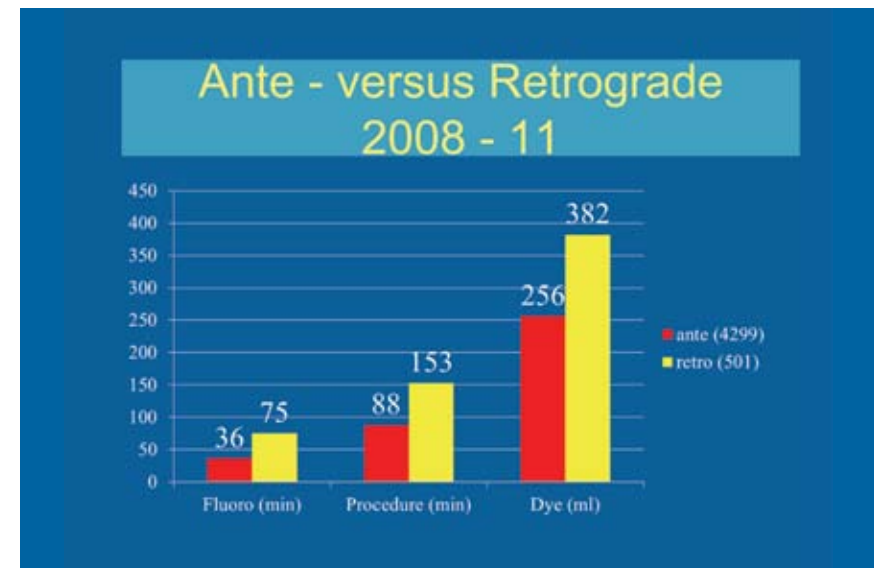




## EURO CTO CLUB - STATISTICS



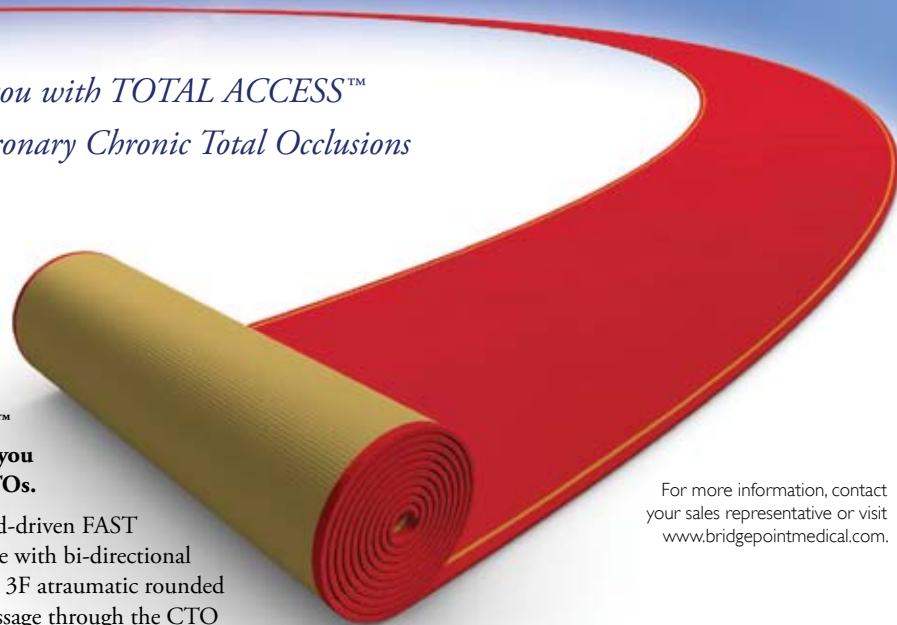
## EURO CTO CLUB - STATISTICS



CrossBoss™ Catheter  
Stingray™ Catheter  
Stingray™ Guidewire

# TOTAL ACCESS™

*Providing you with TOTAL ACCESS™  
to coronary Chronic Total Occlusions*



## The CrossBoss™ Catheter gives you ACCESS to CTOs.

- A unique hand-driven FAST Spin technique with bi-directional rotation and a 3F atraumatic rounded tip enables passage through the CTO

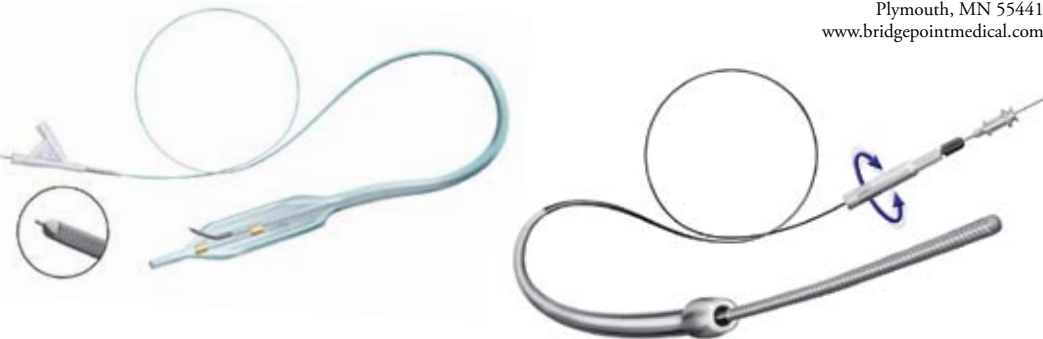
## Stingray™ System's unique design facilitates guidewire ACCESS to the true lumen.

- The flat balloon shape automatically orients itself within the Subintima while the guidewire's distal probe efficiently re-enters true lumen

For more information, contact  
your sales representative or visit  
[www.bridgepointmedical.com](http://www.bridgepointmedical.com)



13355 10th Ave N., #110  
Plymouth, MN 55441  
[www.bridgepointmedical.com](http://www.bridgepointmedical.com)



Indications, contraindications, warnings and instructions for use can be found in the product labeling supplied with each device.  
CrossBoss and Stingray are trademarks of BridgePoint Medical. © Copyright 2012. All rights reserved.

## The Experts „Live“ Workshop 2012

### General Information

**4th Experts "Live" Workshop 2012**  
**September 21 - 22, 2012**  
**London, United Kingdom**

#### Venue

Grange Tower Bridge Hotel  
45 Prescott Street | London E1 8GP | United Kingdom

#### Language

The official language of the congress is English. No simultaneous translation is available.

#### Certificate of Attendance

The Certificate of Attendance will be available on-site at the conference desk.  
The meeting is accredited by the European Board of Accreditation in Cardiology (EBAC).

#### Registration

750,00 € incl. VAT  
350,00 € incl. VAT discounted rate for fellows\*

The Registration for the Conference includes:

- Receipt of the badge of the conference bag
- Attendance of the conference proceedings
- Catering during the conference
- Receipt of the participation certificate

\* Letter from supervisor needed at the time of registration

**Online registration: [www.eurocto2012.eu](http://www.eurocto2012.eu)**

#### Scientific Organisation



Carlo Di Mario, United Kingdom  
Gerald S. Werner, Germany  
Anthony Gershlick, United Kingdom  
David Hildick-Smith, United Kingdom

#### Congress Organisation



wikonect GmbH  
Hagenauer Strasse 53 | 65203 Wiesbaden, Germany  
Tel.: +49 (0) 611 204 809 0 | Fax: +49 (0) 611 204 809 10  
eMail: [info@wikonect.de](mailto:info@wikonect.de) | [www.wikonect.de](http://www.wikonect.de)



We thank the following companies for their support!

## Platinum Sponsor

---



## Gold Sponsor

---



## Silver Sponsor

---



## Sponsor

---

ACIST Medical Systems  
Lilly UK  
Vascular Perspectives



# INNOVATION DESIGNED FOR COMPLEX STENOSES

## SUPPORT

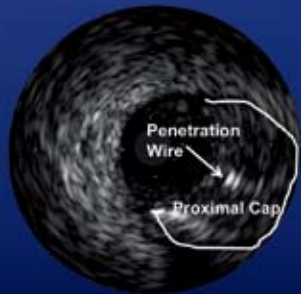
Introducing  
the **Valet™** Microcatheter

Seamless transitions to help  
reduce risk of shaft kinking

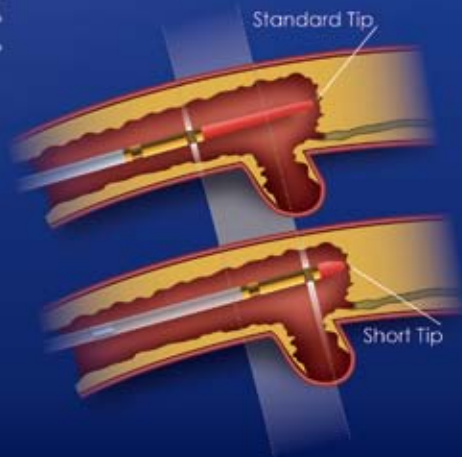
Microwire core designed  
for optimal torque transmission

## GUIDANCE

**Eagle Eye® Platinum ST**  
Digital IVUS Catheter



Successful penetration of proximal  
cap viewed from a side branch



Short tip design helps assess  
more of the vessel and branch

**Available now.**

Ask your Volcano representative for a trial.

Visit us at [www.volcanocorp.com](http://www.volcanocorp.com)

 **VOLCANO**  
PRECISION GUIDED THERAPY



## Imprint

### EURO CTO CLUB

#### Course Director

Carlo Di Mario  
London, UK

#### Co-Directors

Anthony Gershlick  
Leicester, UK

David Hildick-Smith  
Brighton, UK

#### Scientific Board

Gerald S. Werner  
Darmstadt, Germany

Nicolaus Reifart  
Bad Soden, Germany

Alfredo R. Galassi  
Catania, Italy

Hans Bonnier  
Brussels, Belgium

George Sianos  
Thessaloniki, Greece

Javier Escaned  
Madrid, Spain

### CONGRESS AGENCY / ORGANIZER

#### wikonect GmbH

Hagenauer Str. 53  
65203 Wiesbaden, Germany

# "having wings again"\*

Physicians using the medical devices developed and manufactured by Alvimedica have the ability to offer their patients a brilliant second chance at life. Patients start this second life feeling like having wings again.



\*Mustafa Özdemir  
First comment after  
a percutaneous coronary  
artery intervention.

## CORACTO™

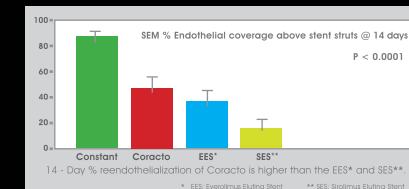
RAPAMYCIN-ELUTING CORONARY STENT DELIVERY SYSTEM

Bioabsorbable polymer drug carrier completely absorbed in 10 – 12 weeks in the body.  
Well proven efficacy in coronary chronic total occlusion. | 1  
Improved reendothelialization. | 2  
Reduced time of dual antiplatelet therapy. | 1 | 3  
Reduced risk of restenosis and TVR. | 1

- 1) Reifart N., et al. Short and longterm randomised comparison (24 months) of an alternative rapamycin-coated stent with bioabsorbable polymer and a bare metal stent of similar design in chronic coronary occlusions. Eurointervention. 2010;6:356-360
- 2) Virmani R., et al. A Newly Developed Rapamycin-Eluting stent with a biodegradable Polymer Reduces Neointimal Formation While Allowing Greater Endothelialization. JACC March 9, 2010, V55, I10A.
- 3) Reifart N. Registry of a Rapamycin coated stent with biodegradable polymer in all comers. Internal Report. 2009



A New Era in DES Therapy





# Driving Innovation Delivering Solutions

## TREK & MINI TREK

Coronary Occlusion Catheter

No environment too challenging.

Experience a smooth transitionless design for maximum control even when accessing complex lesions.

MINI TREK built for Complex Lesions

77 sizes.

including 1.20 mm diameters

## PROGRESS

Family of Chronic Occlusion Guide Wires

Know where you're going,  
not where you've been.

- 1 Tapered, exposed coil tip
- 2 Intermediate Polymer Sheath with Hydrophilic Coating
- 3 Hydrophobic Coating

All products here in are trademarks of the Abbott Group of Companies.

### Contact your sales representative for more information.

Photo(s) on file at Abbott Vascular. All drawings are artist's representations only and should not be considered as an engineering drawing or photograph.

Products intended for use by or under the direction of a physician. Prior to use, it is important to read the package insert thoroughly for instructions for use, warnings and potential complications associated with use of this device. Information contained herein is for distribution for Europe, Middle East and Africa ONLY. Please check the regulatory status of the device before distribution in areas where CE marking is not the regulation in force. For more information, visit our website at [abbottvascular.com](http://abbottvascular.com)

© 2011 Abbott. All rights reserved. 1-EH-2-1187-01 07/2011

**Abbott**  
Vascular